

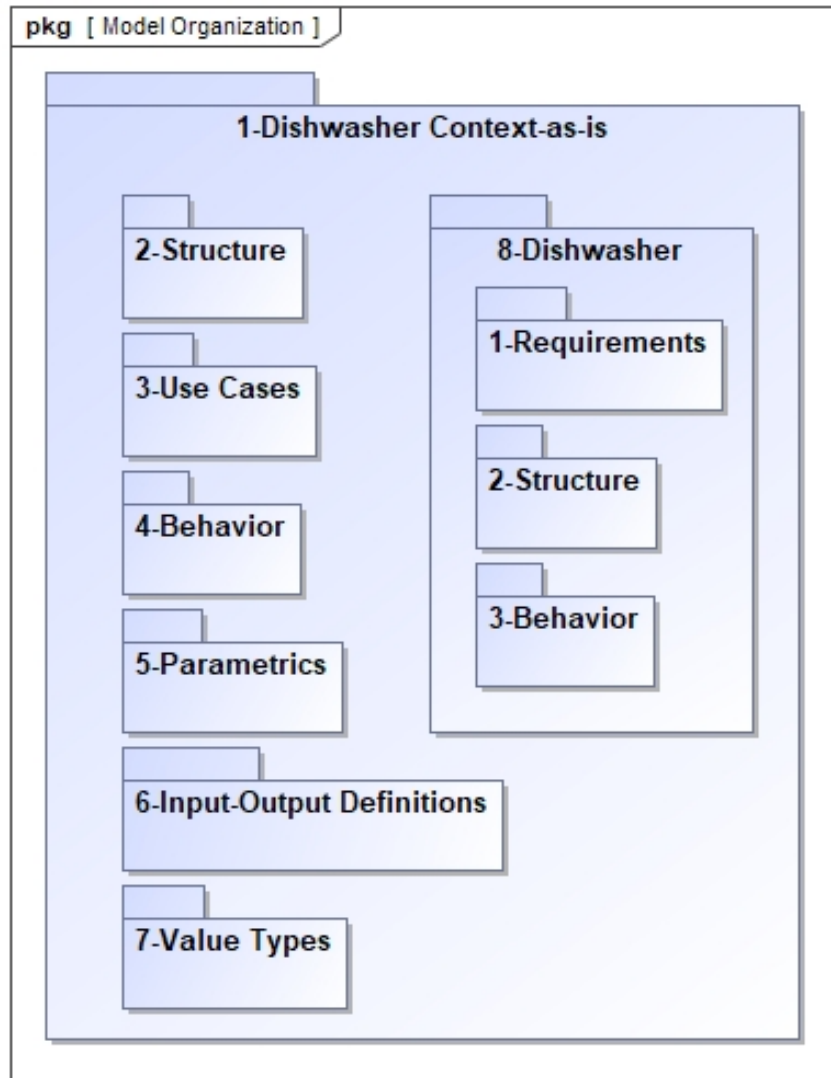
Object-Oriented Systems Engineering Method (OOSEM)

Reference Example As-Is Model

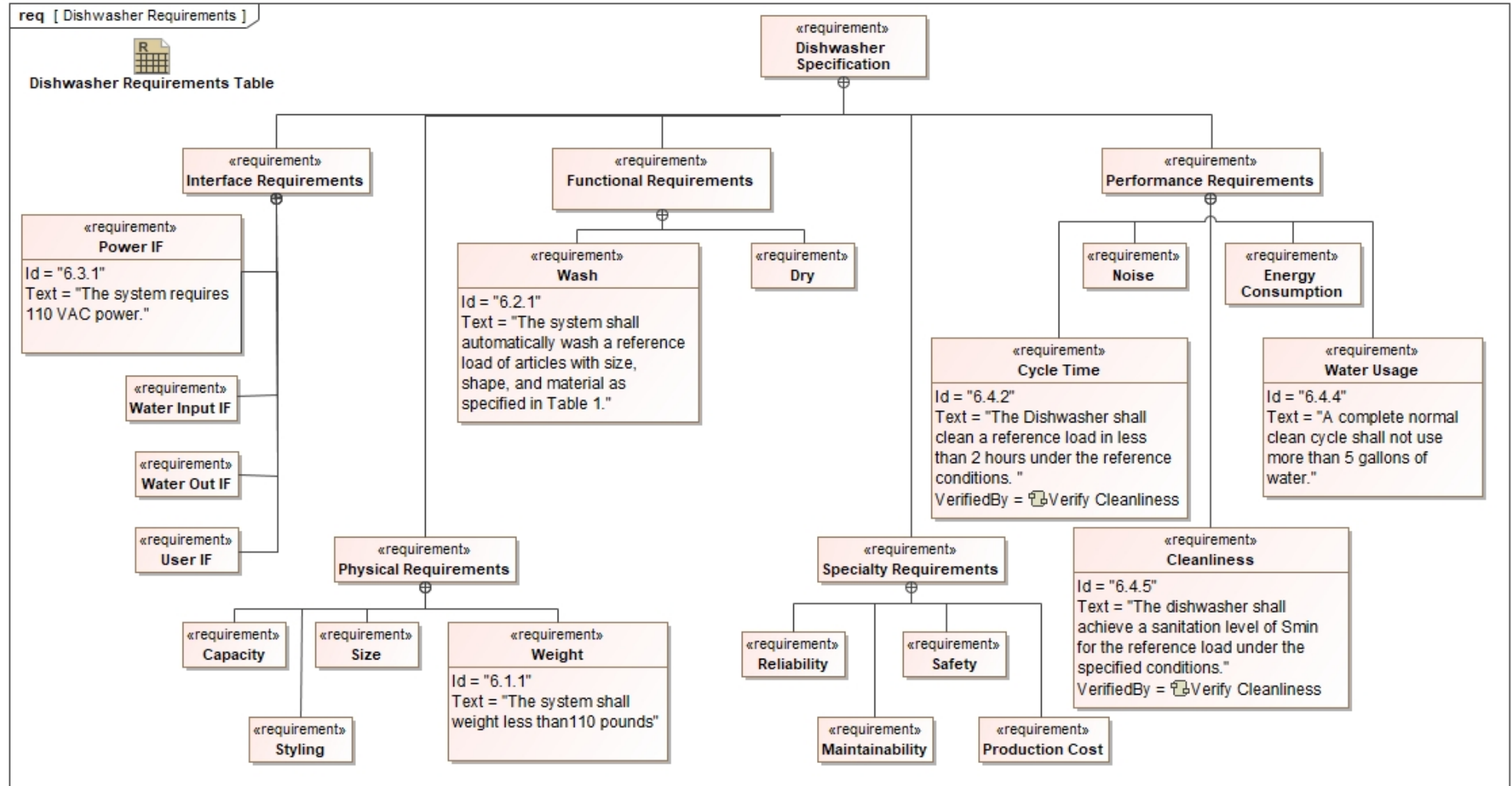
As-Is Model

- Model may already exist or may need to be developed
- Capture as-is model to identify capabilities and limitations of the as-is system and reuse opportunities for the to-be system
- Dishwasher reference example validated data sources
 - Dishwasher specification
 - Dishwasher operator's manual
 - Other design documentation

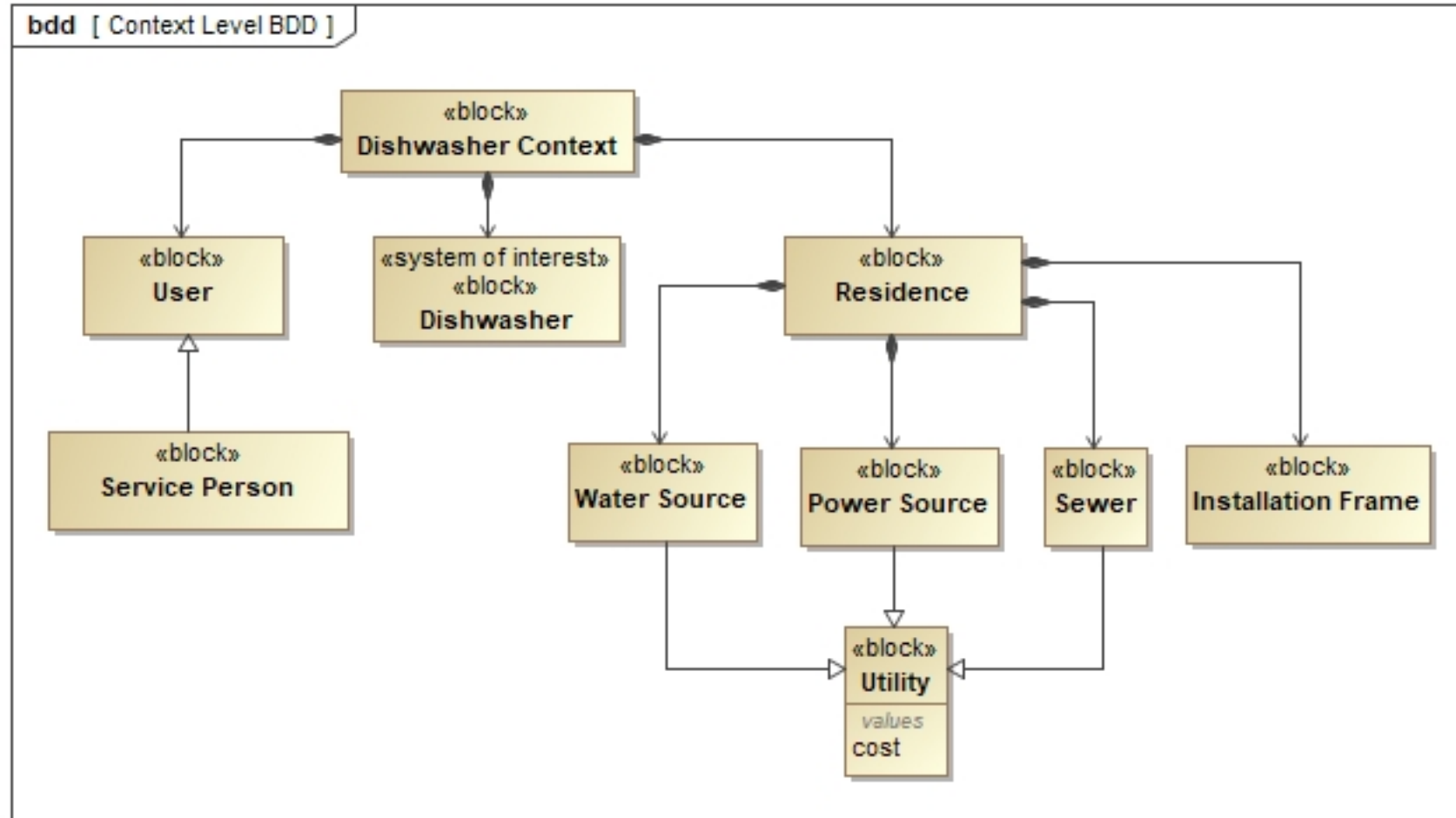
Model Organization



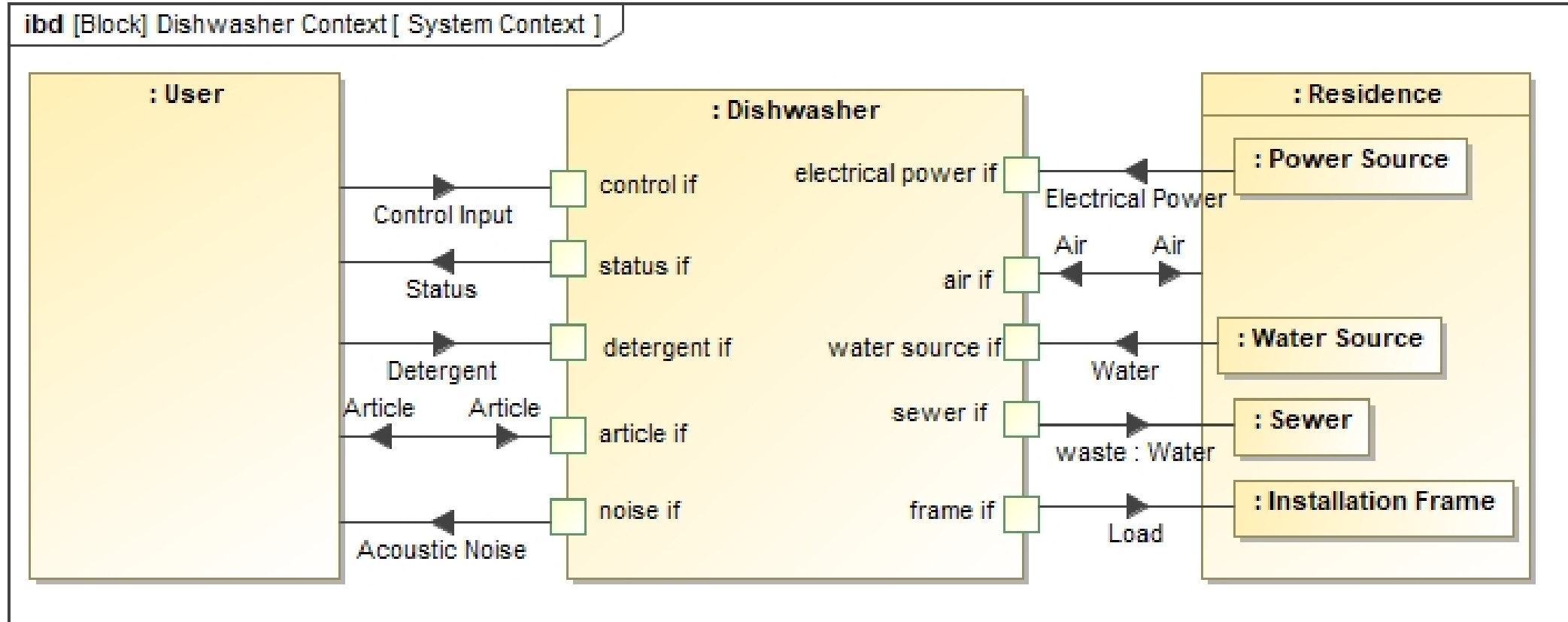
Dishwasher Requirements



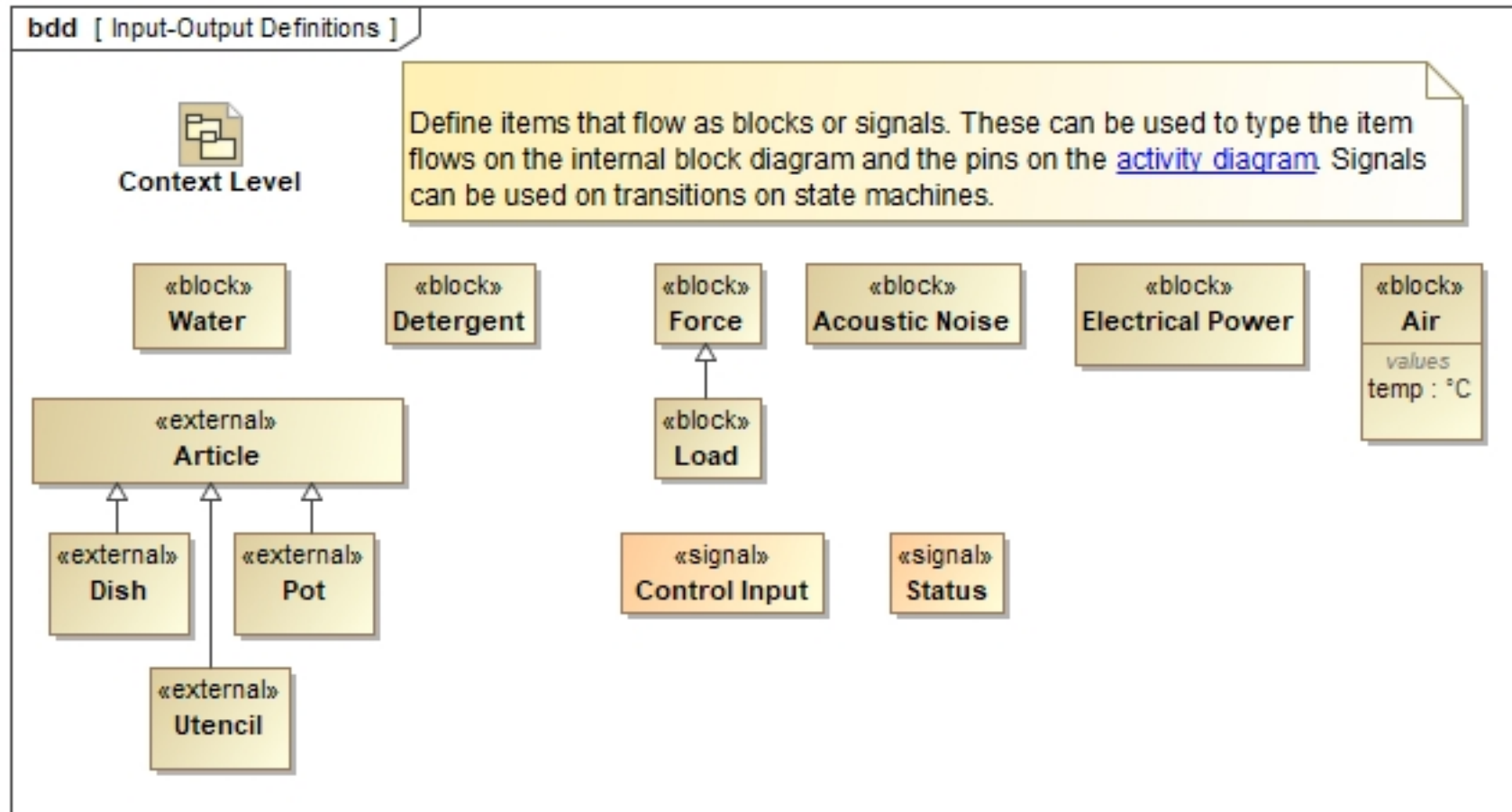
Top Level BDD



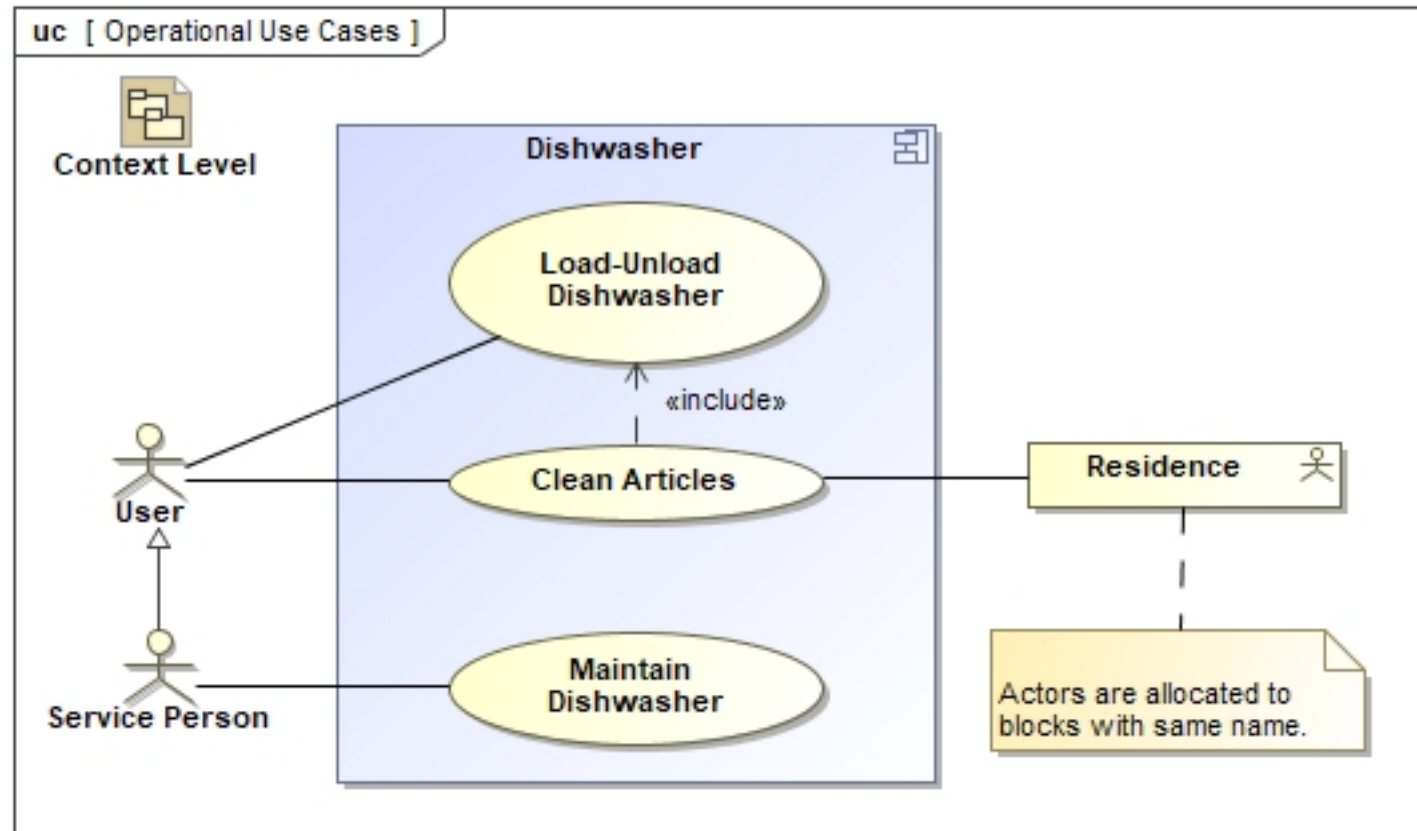
Dishwasher IBD System Context



I/O Definitions

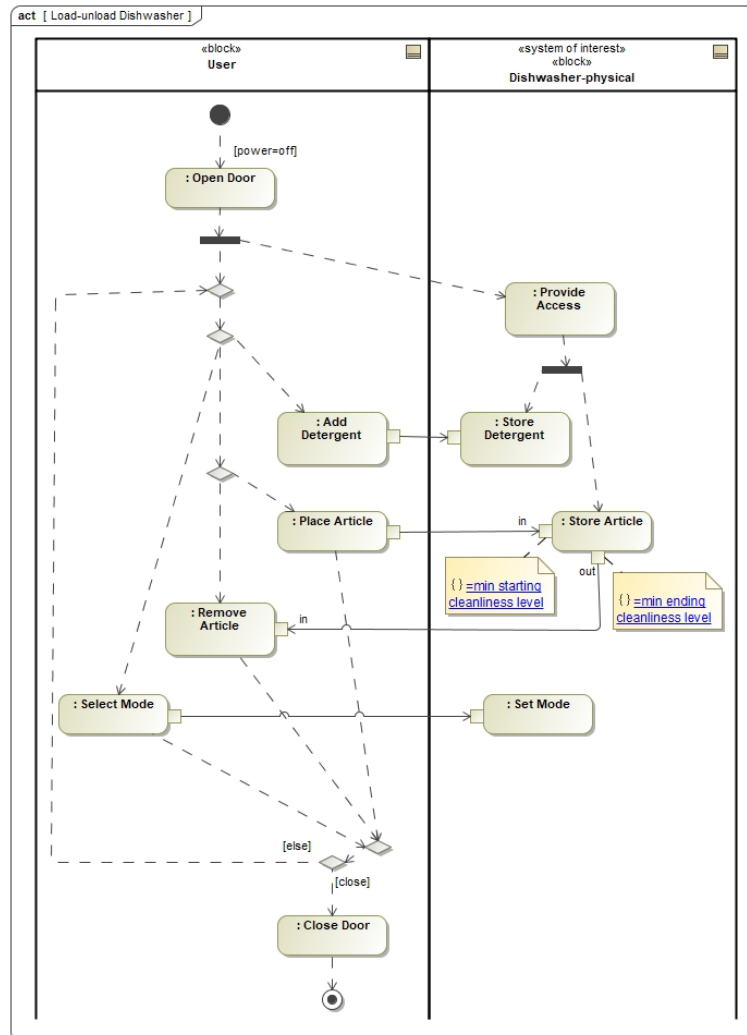


Dishwasher Use Cases



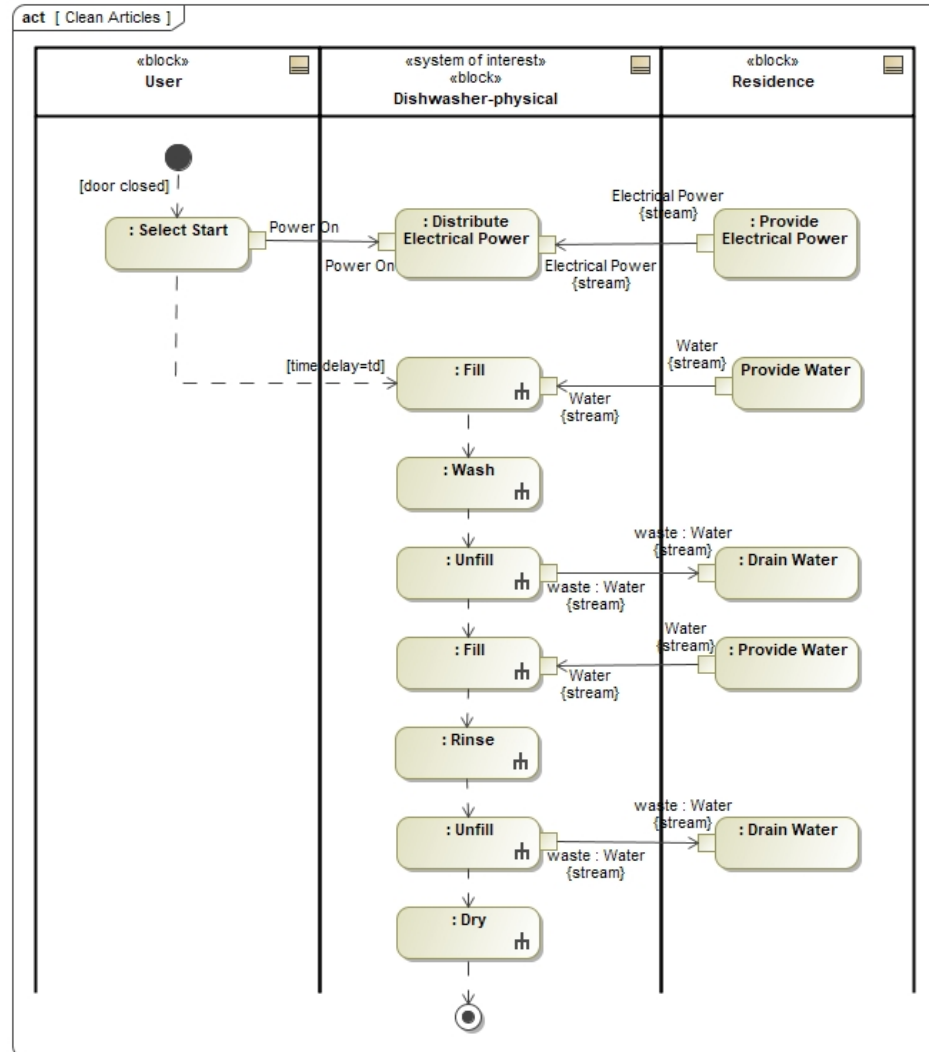
Activity Diagram

Load/Unload Dishwasher

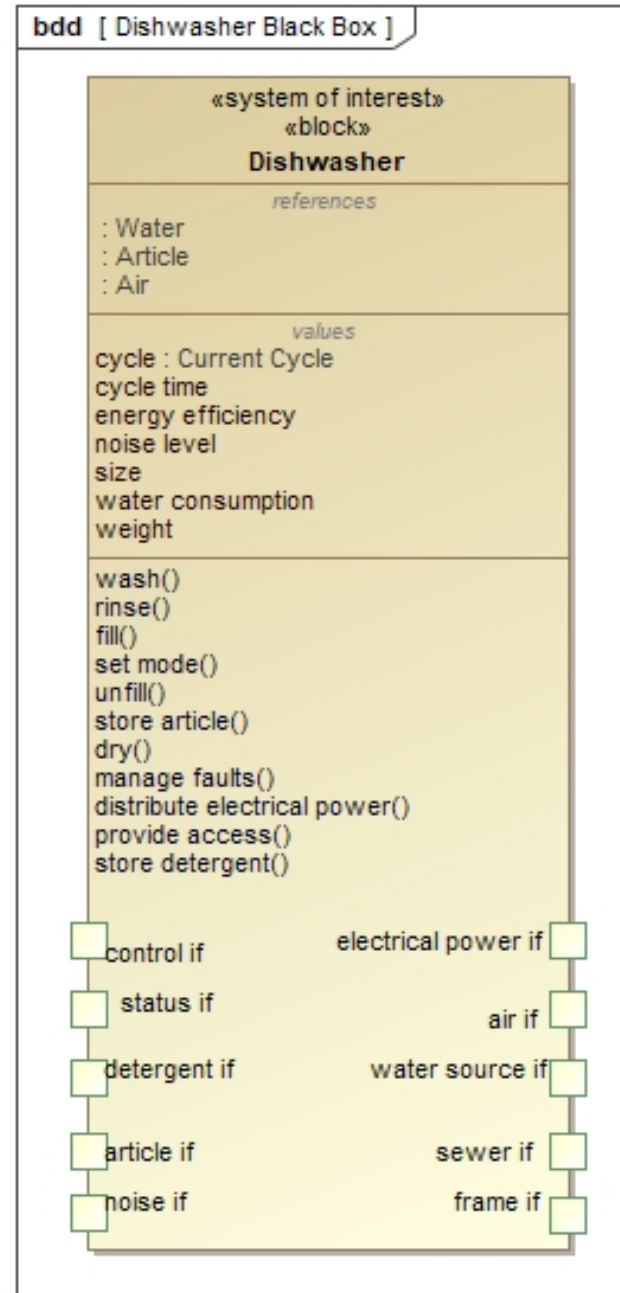


Activity Diagram

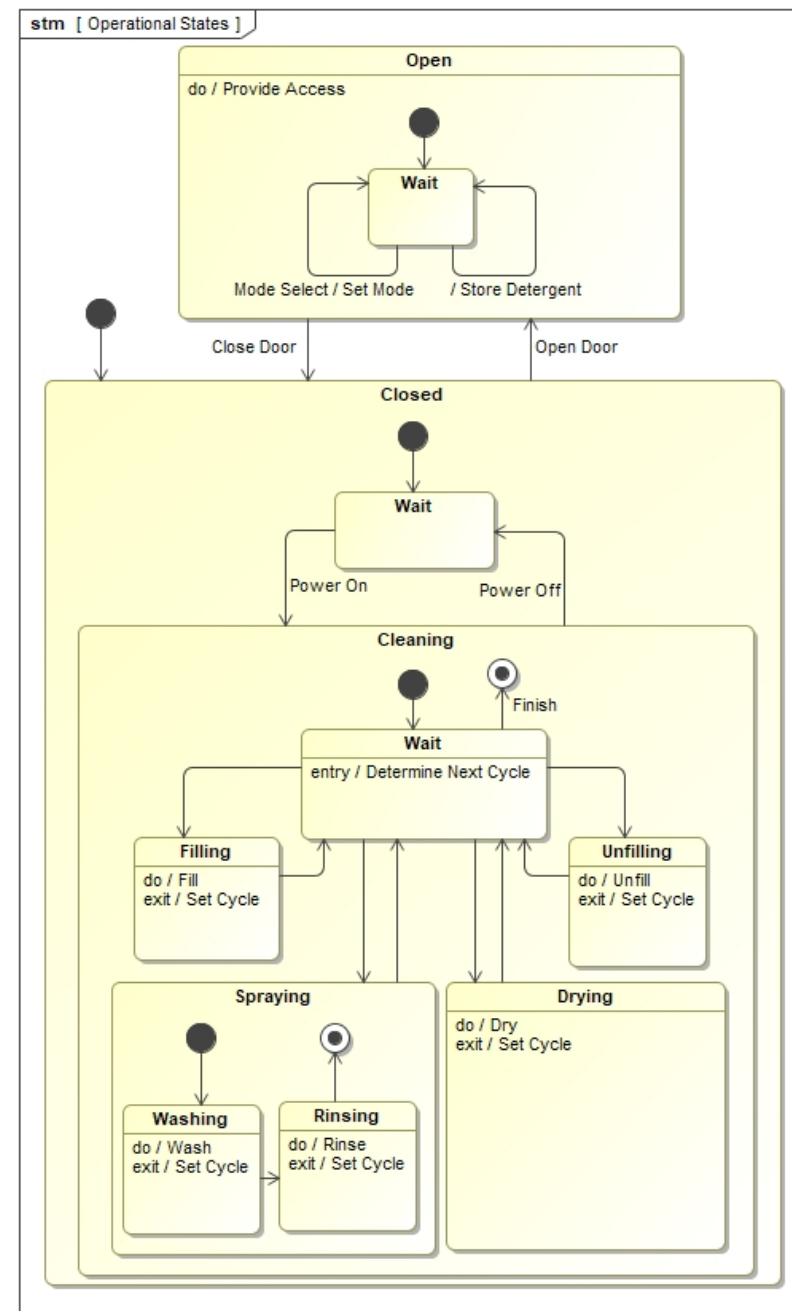
Clean Articles



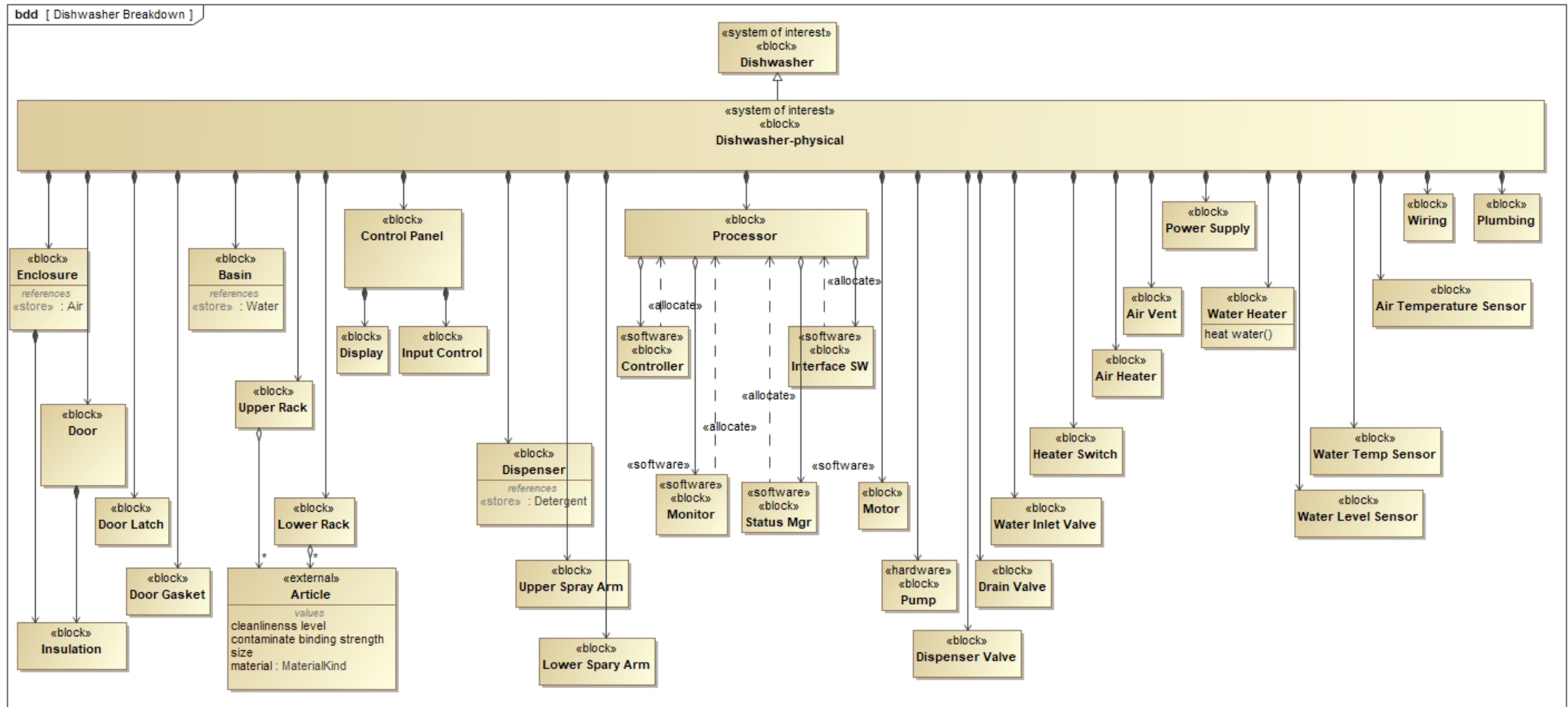
Dishwasher Black Box Specification



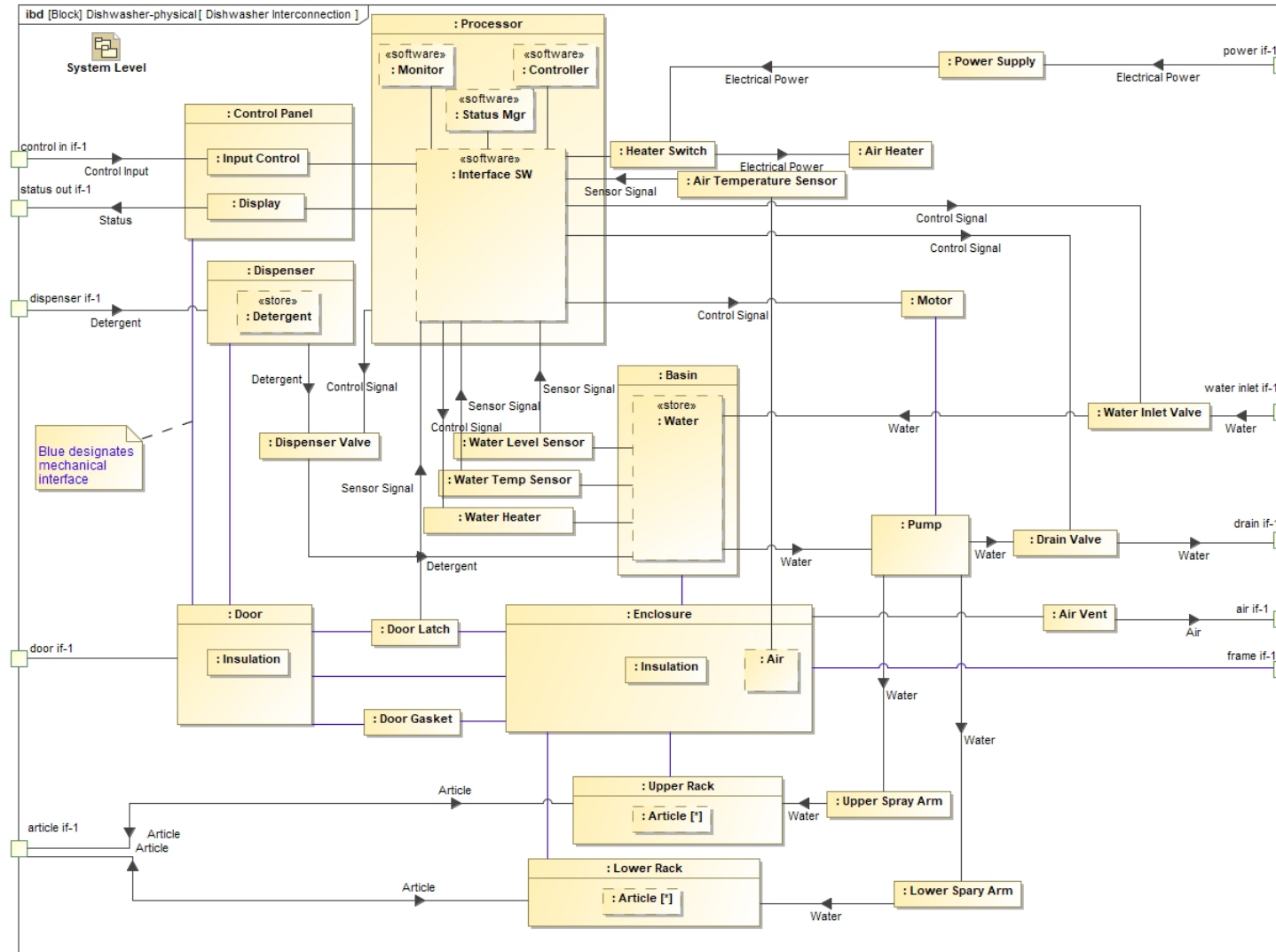
State Machine Dishwasher States



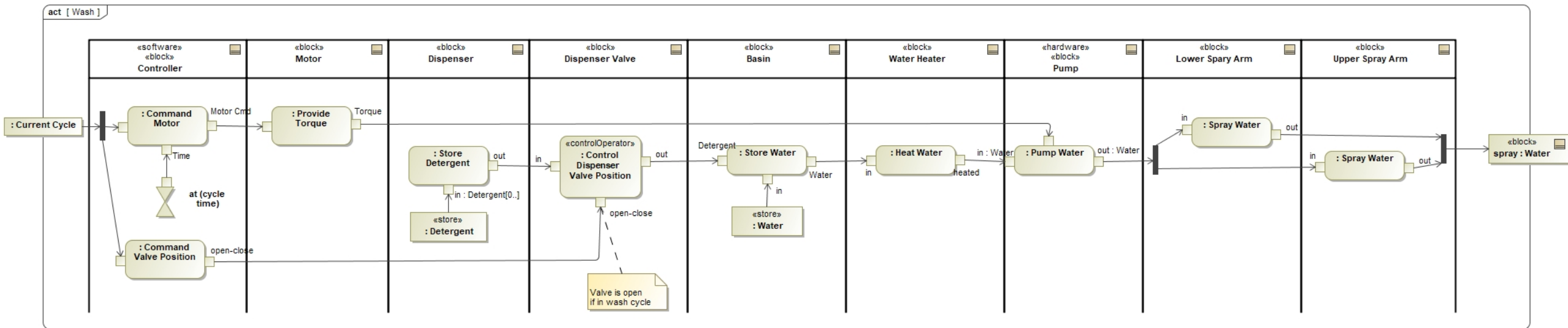
System Physical Breakdown



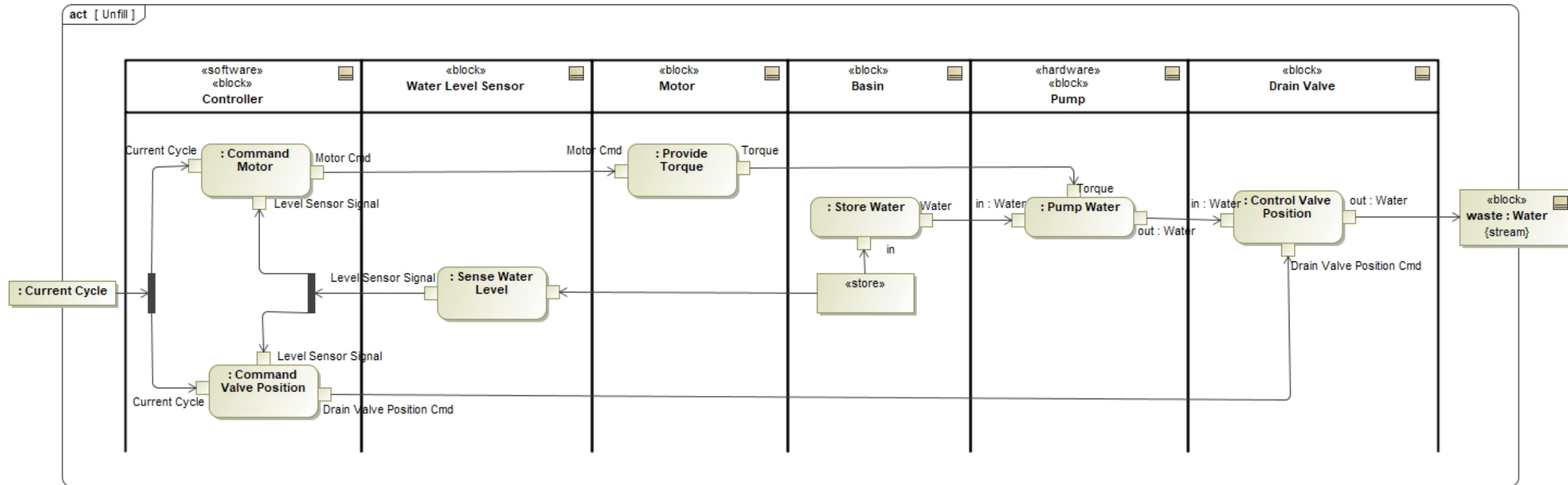
System Interconnection



Activity Wash



Activity Unfill



Parametrics

Cleanliness Analysis

